



HOUSE *of* CHRISTINE

HEADWEAR



*Magnificent  
Hoods*

AW / 2022





NEW  
MODEL



## Magnificent Moods

With autumn comes the urge to fall into hygge-mood. With fluffy blankets and mug after mug of hot tea. And that's not a bad way to go, actually it seems like the only way when the leaves turn brown and orange. But what if we could combine the hygge-days with evening extravaganza and the opportunity to dress in magnificent turban designs and colours so fine you would want to twirl all night? That'll be the ultimate autumn mood – you wanna join us?

The striking new Boho Spirit turbans are a combination of all things magnifique. Dark colours, detailed prints and designs placed in extraordinary surroundings that adds the perfect lifestyle mood to the collection. Use the Boho models to dress up your everyday outfits and be that woman who makes a turban statement for non-other, than yourself.

Christine offers a large collection of scarves and turbans in all the materials you love to wear. The colours and prints in the bamboo series are both bright, cosy and elegant depending on how you dress them either up or down. Look out for a new Supima model with beautiful details on page 22, this one is definitely an autumn must-have.

The Viva line carries the perfect 'grab & go' models in both vibrant autumn colours and stylish one-colour variations. You are sure to find an easy and comfortable Viva-favourite this season too.

Choosing headwear for the first time can be overwhelming – *"what do I need, how will I look and how will it make me feel?"* Headwear comes in many shapes and forms and your choice should make you look and feel like the person you are by heart – with your beautiful new turban silhouette.

We welcome you all to our headwear universe. We hope to inspire you to try new models, stylings and in general just to make your turban-time into *'your own kind of wonderful'*.

Front page: 3032-0838 Scarlett - Boho Turban Set  
1 - 1532-0796 Belisa Turban w. Ribbons - Printed

Style details page 62, 67





*Christine*  
HEADWEAR

With beautiful and unique designs Christine Headwear offers you a wide range of feminine, contemporary and versatile head coverings. An aesthetic collection made to give you the possibility of dressing up your life and lifestyle when experiencing hair loss.

The natural fabrics used to form and complete the high quality Danish designed collections are carefully selected to provide you with comfortable, fashionable and functional headwear. Leaving you covered and confident with a beautiful feminine framed silhouette.

A wearable yet sophisticated brand with excellent fitting and exquisite style created with love for the beautiful you.

#forthebeautifulyou

1 - 2000-0795 Yoga Turban - Printed





## CHRISTINE HEADWEAR bamboo collection

The bamboo-viscose products from Christine Headwear are made in the unique and functional Caretech® Bamboo quality.

Bamboo-viscose fabric has many fantastic features and the soft and comfortable quality is actually used to form the largest part of the Christine Headwear product range.

The Caretech® Bamboo is supremely soft, silky and luxurious to the touch. It is breathable and thermo-regulating so you remain comfortable and dry during both summer and winter temperatures. The fabric is more moisture absorbent than cotton and quickly removes the moisture from the skin and releases it.

Further the eco-friendly Caretech® Bamboo products are extremely gentle to wear and highly suitable to use against sensitive skin.

1 - 1008-0795 Lotus Turban - Printed

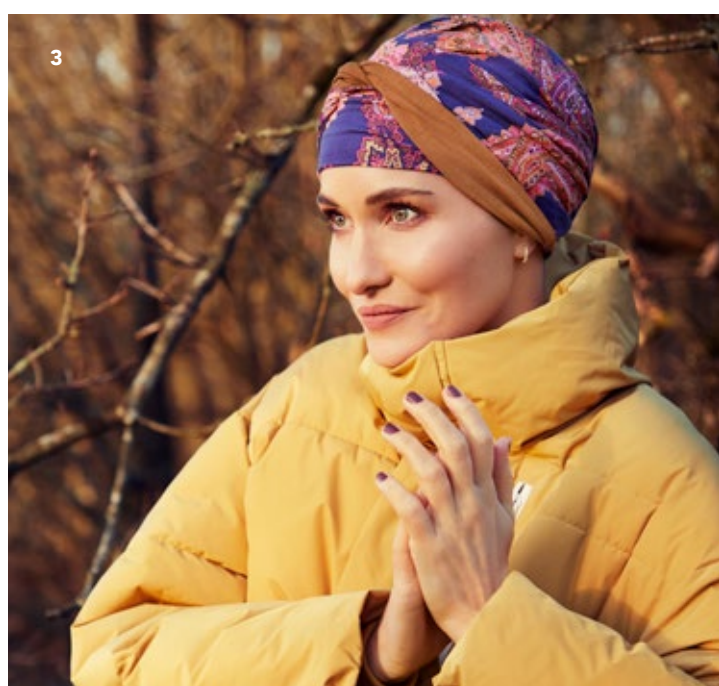
Style details page 62



2 - 1419-0795 Beatrice Turban w. Ribbons / 3 - 1418-0795 Shakti Turban - Printed  
4 - 1529-0795 Amia Turban - Printed

Style details page 62-63





1 - 1532-0794 Belisa Turban w. Ribbons - Printed / 2 - 2000-0794 Yoga Turban - Printed  
3 - 1418-0794 Shakti Turban - Printed / 4 - 1419-0794 Beatrice Turban w. Ribbons





1 - 1008-0796 Lotus Turban - Printed / 2 - 2000-0796 Yoga Turban - Printed  
 3 - 1419-0796 Beatrice Turban w. Ribbons / 4 - 1331-0796 Shanti Turban w. Print





1 - 1331-0793 Shanti Turban w. Print / 2 - 1418-0793 Shakti Turban - Printed





1 - 2000-0793 Yoga Turban - Printed / 2 - 1008-0793 Lotus Turban - Printed  
3 - 1529-0793 Amia Turban - Printed





1 - 1461-0805 Shanti Turban - Mixed Colours / 2 - 1366-0384 Tula Turban  
3 - 1507-0829 Shakti Turban





1 - 2000-0792 Yoga Turban - Printed / 2 - 1008-0792 Lotus Turban - Printed  
 3 - 1418-0792 Shakti Turban - Printed / 4 - 1529-0792 Amia Turban - Printed





1 - 1508-0804 Nava Turban / 2 - 1533-0827 Aurelia Hat



NEW  
MODEL



1



## CHRISTINE HEADWEAR supima cotton

The Caretech® Supima Cotton is a luxurious cotton quality from Christine Headwear.

Supima is regarded as one of the finest cotton qualities available and is both more durable than regular cotton and much softer to the touch.

With a Supima product you will get a long-lasting premium product with strong pilling resistance, a beautiful colour retention and high-class comfort.



2



3



4



1 - 1490-0774 Nomi Turban / 2 - 1521-0656 Sena Turban  
3 - 1438-0655 Mila Turban / 4 - 1484-0657 Zuri Turban





CHRISTINE HEADWEAR  
body balance line

– an innovative headwear line  
with unique technology



1 - 1293-0318 B.B. Becca Turban / 2 - 1291-0383 B.B. Beatrice Turban w. Ribbons



## 37.5® TECHNOLOGY



37.5® active particles ensure  
ultimate comfort and wellbeing



37.5® technology helps warm you  
up when you're cold and cool you  
down when you're hot



37.5® technology helps you  
maintain a comfortable personal  
microclimate relative humidity  
of 37.5%



37.5® technology removes sweat  
in the vapor stage before liquid  
sweat forms



37.5® active particles are derived  
from nature



For further information on 37.5® go to page 71





## VIVA *Headwear*

Viva Headwear is a contemporary design line for women with hair loss. A considered design made in light and comfortable materials giving women the perfect cover and fitting.

Providing a value for money and an effortless collection to the everyday life and wardrobe, the classic Viva image will match any motion and lifestyle.

#imwearingviva

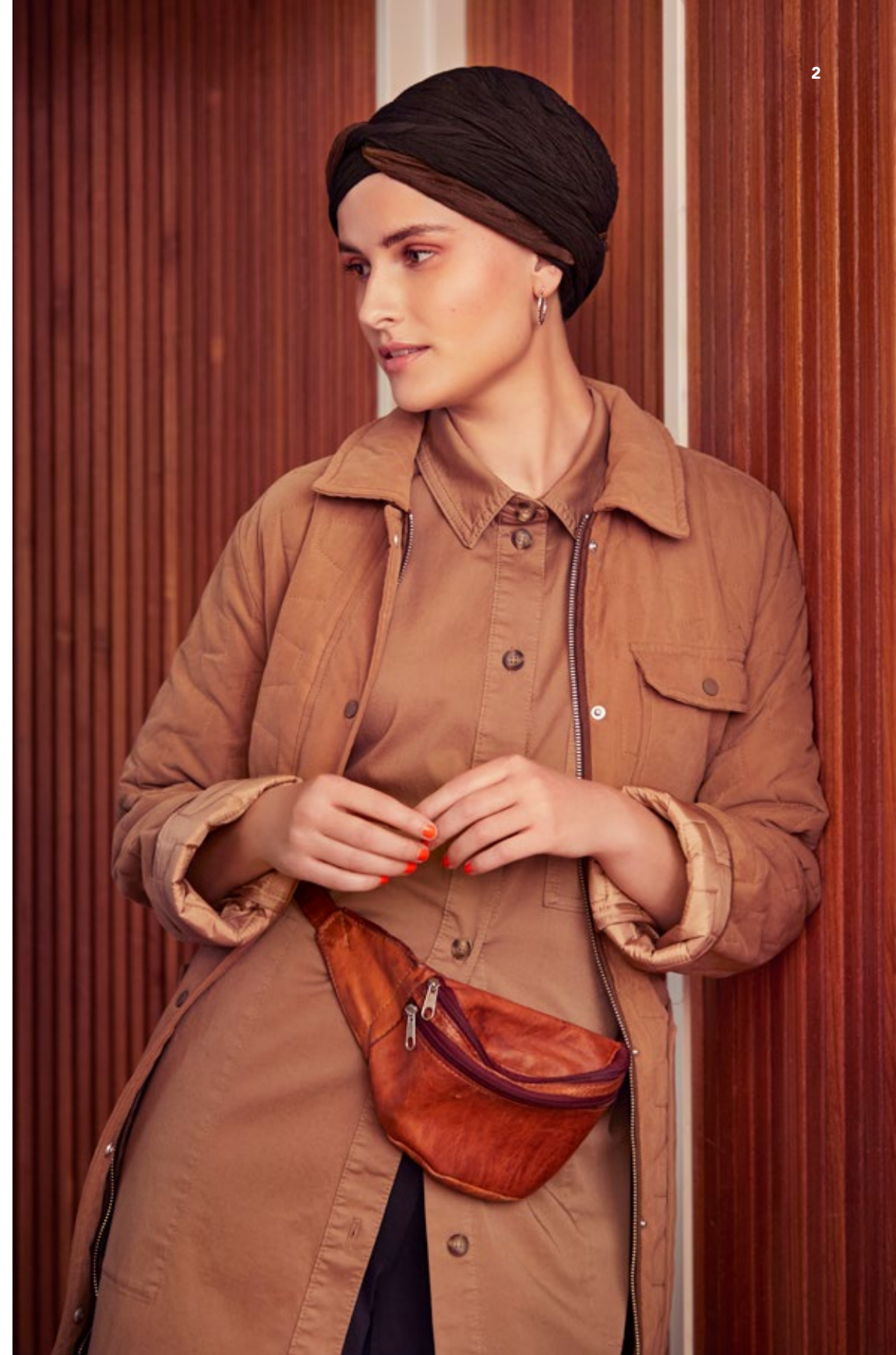
1 - 1528-0822 Luna · V Turban

Style details page 65





1



2

1 - 1527-0821 Luna · V Turban / 2 - 1537-0810 Zoya · V Turban





1 - 1534-0808 Emmy · V Turban - Printed / 2 - 1537-0834 Zoya · V Turban







1 - 1470-0673 Nelly · V Turban / 2 - 1536-0835 Lea · V Turban - Printed  
3 - 1377-0575 Ebba · V Knitted Hat / 4 - 1376-0573 Mille · V Knitted Hat



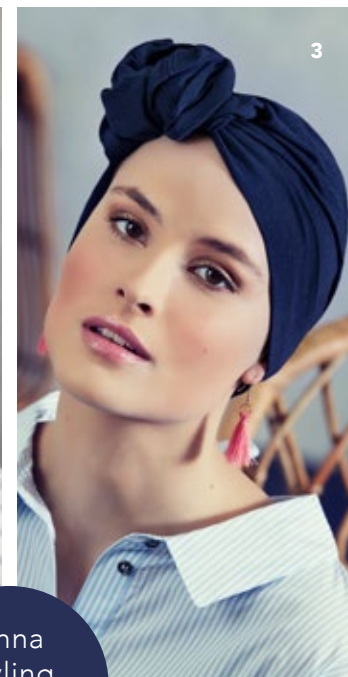
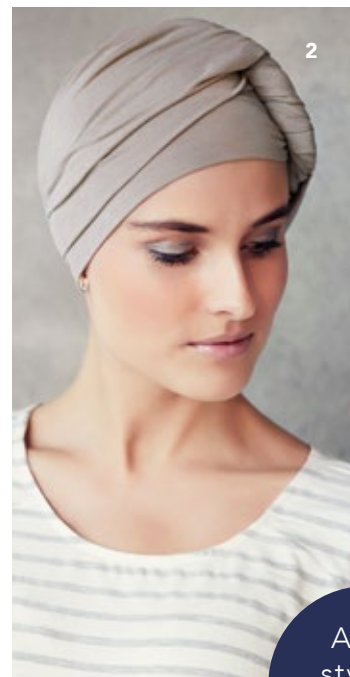



# VIVA HEAD WEAR

basics

FIND YOUR FAVOURITE  
**ANNA · V TUBE STYLING**

Find more exciting tube  
stylings on the House of Christine  
YouTube Channel



Anna  
styling  
inspiration

1 - 1356-0556 Laura · V Turban  
2 - 1355-0553 Anna · V Tube / 3 - 1355-0555 Anna · V Tube





1

**2 IN 1**  
turban &  
headband



*Boho Spirit*  
HEADWEAR

The wonderful world of Boho Spirit is a palette of powerful and colourful headwear designed to give the modern bohemian woman a choice to form her own individual free spirited look and style.

From sunny-day patterns to warm and full-bloom florals, this inspiring headwear universe is created to make you look and feel chic and fabulous whatever the weather.

Prints are our favourite thing, we simply love all shades of colour and believe our boho headwear should always make you feel feminine, empowered, radiant and confident.

Whether your hair or wig is long and curly, short and sweet or you are bald and beautiful, we have the boho headwear just for you.

*"Make it your own kind of wonderful"*

1 - 3032-0837 Scarlett - Boho Turban Set

Style details page 67



1

**MIX & MATCH**  
turban &  
headband

2

1 - Mix of 3015-0615 & 3035-0839 Sapphire - Boho Turban Set & Scarlett - Boho Headband  
2 - 3026-0801 Sapphire - Boho Turban - Printed





1

**2 IN 1**  
turban &  
headband  
**2 LOOKS**



1



2

**MIX & MATCH**  
turban &  
ribbon



3

3

- 1 - 3032-0843 Scarlett - Boho Turban Set
- 2 - Mix of 3026-0830 & 3033-0841 Sapphire - Boho Turban - Printed & Sapphire - Boho Ribbon
- 3 - 3026-0830 Sapphire - Boho Turban - Printed



1



**MIX & MATCH**  
turban &  
headband

2



1 - Mix of 3015-0614 & 3035-0840 Sapphire - Boho Turban Set & Scarlett - Boho Headband  
2 - 3026-0802 Sapphire - Boho Turban - Printed



**3 IN 1**  
turban,  
ribbon &  
styling ring

3036-0828 Sienna - Boho Turban Set - Printed

Style details page 67





RM  
1  
209



2

1 - 3028-0825 Pandora - Boho Cap / 2 - 3038-0811 Ruby Skye - Boho Hat





1 - 3040-0833 Amber - Boho Turban Set - Printed / 2 - 3040-0831 Amber - Boho Turban Set - Printed  
3 - 3040-0832 Amber - Boho Turban Set - Printed





**2 IN 1**  
turban &  
headband



**2 IN 1**  
Turban &  
Band



**2 IN 1**  
turban &  
headband

1 - 3031-0745 Scarlett - Boho Turban Set - Printed / 2 - 3015-0615 Sapphire - Boho Turban Set  
3 - 3001-0579 Sapphire - Boho Turban Set / 4 - 3025-0684 Scarlett - Boho Turban Set





## CHRISTINE HEADWEAR accessory line

Find the small yet important necessities in the Christine Headwear accessory collection. A range of carefully constructed wigliners, tops, night caps etc. - all made in soft, comfortable and intelligent materials for your wellbeing.

Look out for the smart and cleverly constructed Soft Lift Hat, that will give the back of the bare head a beautiful gentle lift under your head coverings. Another one not to miss, is the Christine underwear top with the revolutionary 37.5® Technology, constructed so you can easily put it on even if raising your arms can be a struggle.

Sometimes the little necessities makes the biggest difference.



CARETECH®  
BAMBOO  
w/ALOE VERA



CARETECH®  
BAMBOO



For further information on our certifications and qualities – see page 71

1 - 1241-0318 B.B. Bea Turban  
Style details page 56



1

## CHRISTINE HEADWEAR underwear collection

The Christine underwear top is a unique and comfortable underwear piece developed with both intelligent features and materials.

Comfort in clothing, underwear in particular, is often dictated by your body temperature. It can, however, be difficult to maintain a balance at 37.5-degrees when our body goes through changes, either due to surgery, treatment for critical illnesses or when suffering Alopecia.

It can be hard to control the hot and cold flushes that makes us so uncomfortable, but this top will help you! The 37.5® Technology used in the fabric material helps control your core temperature, regulates it and will keep you in the optimal 37.5-degree comfort zone at all times.

For further comfort and convenience, we've constructed the top so you can get dressed without having to pull it over your head, which can be difficult when having gone through a breast or under arm surgery. The neck line is beautifully placed and has an elegant and feminine silky satin trim.

A truly comfortable and practical top made particularly for your wellbeing.



1



1 - 1450-0628  
**Christine Top - 37.5®**  
Wool / Polyester w. 37.5® Technology  
Size: S, M, L, XL



1



## CHRISTINE HEADWEAR soft lift hat

The Soft Lift Hat from Christine Headwear is a revolutionary design protected headwear piece, which will provide the perfect fit and lift under your wigs and headwear.

A small hat that will make a big difference to the look and feel of your head coverings, as it gently lifts and adds a fine, natural volume to the back of the head. The soft, breathable and light 37.5® fabric material will ensure you stay comfortable as it helps the covered area maintain an optimal 37.5-degree temperature - regardless of how you choose to cover it.

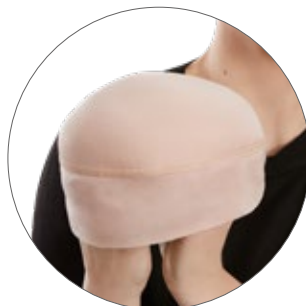
To make this clever little lift, a light mesh pad has been insertet under a soft top layer. This will add a beautiful rounded shape to the back of your head whilst leaving you comfortable, feeling nothing but carefully and gently protected.

The results are nothing but fantastic and you'll find your headwear and wigs will get a brand new, fine and elegant look to it.



0628

1 - 1220-0628  
Christine Soft Lift Hat - 37.5®  
Wool / Polyester w. 37.5® Technology



BEFORE



AFTER

1



## CHRISTINE HEADWEAR b.b. belinda wigliner

A comfortable and practical wigliner with 37.5® Technology, which will leave your sensitive scalp feeling cool and refreshed underneath your choice of head covering.

The B.B. Wigliner has a slim silicone band to ensure a secure fit and is made with a soft, see-through mesh piece down the front. This, so you can wear your wig without having to worry about the liner being visible underneath.



0628

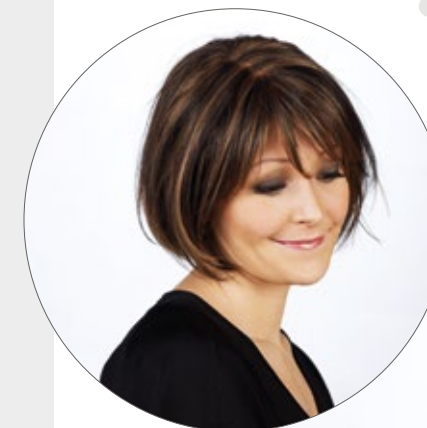
1 - 1448-0628  
B.B. Belinda Wigliner - 37.5®  
Wool / Polyester w. 37.5® Technology

2

## CHRISTINE HEADWEAR nouli wigliner

The Nouli Wigliner is a small hat with a perfect fit, which can be worn under a wig or your headwear for further protection. This must-have accessory keeps you cool in the heat and helps you stay warm when it is cold due to the functional Caretech® Bamboo fibres.

To add even further comfort this seamless wigliner has received an Aloe Vera treatment, which is known to have a soothing and relaxing effect on the skin.



2



0248



0249



0396

2 - 1007-0248  
Nouli Wigliner w. Aloe Vera  
Bamboo-viscose



CHRISTINE HEADWEAR  
night wear collection



CHANDRA W. CARETECH® BAMBOO

The comfortable cap, made in soft Caretech® Bamboo, is the perfect night wear model. The small and light cap is both soft and breathable and due to its functional abilities, and the bamboo features, it will keep you warm during the cold nights and cool when the nights are warm.

Chandra is suitable for use during the day too. Add a headband or a loose scarf and you'll quickly have a stylish and unique turban look.

1189-0320  
**Chandra Night Cap**  
Bamboo-viscose



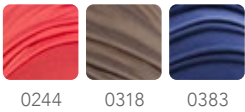
B.B. BEA W. 37.5° TECHNOLOGY

B.B. Bea is a stylish night and home wear turban solution with unique functionality. The turban is made in the popular 37.5° fabric that ensures a stable and balanced temperature of 37,5 degree Celsius on the covered area.

This turban will therefore leave your sensitive scalp area, and you, feeling both refreshed and comfortable after a good night's sleep.

For your wellbeing the inside of the Bea turban has no irritating seems and the fabric is so light and soft, you will forget you are wearing it.

1241-0318  
**B.B. Bea Turban**  
Wool / Polyester w. 37.5° Technology

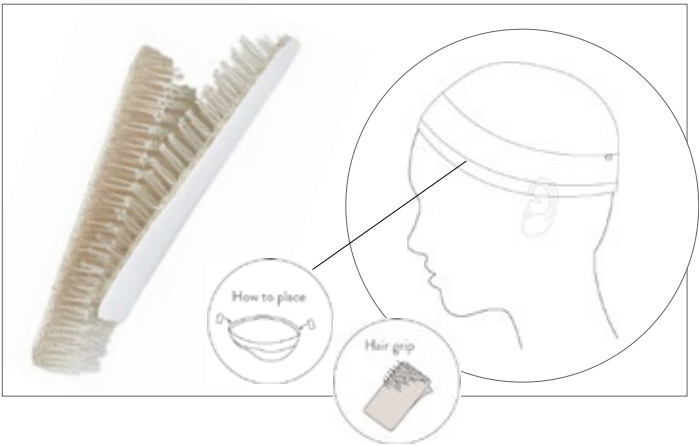
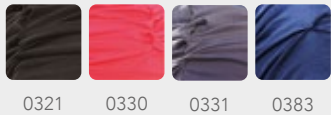


CHRISTINE HEADWEAR  
wave swim cap

The swim cap from Christine Headwear is a unique and comfortable cap suitable for all kinds of water activities. The stylish swim model covers your scalp perfectly as the cap construction ensures a tight, yet comfortable fit, during your activity.

Wave Swim Cap is suitable for both indoor and outdoor swimming.

1033-0331  
**Wave Swim Cap**  
Nylon / Spandex



HAIR GRIP

A hair grip helps secure your choice of head covering, when new hair starts to show.

This little accessory will help keep your wig, turban or wig cap securely fitted. Use the sticky tape on the one side to attach to your head covering and let the small Velcro grippers blend gently into your hair.

The hair grip is both easy to attach and comfortable to wear under your head covering.

1498-0719  
**Hair Grip - Set**  
Polyamide  
0719

STYLING RING

A styling ring is a good accessory when you want to create stylish volume by adding long ribbons and scarves to your turbans.

Use it to secure your favorite ones and create a knot, a bow, a braid or anything you like.

Visit House of Christine on YouTube for styling tips and ideas.



Page 44-45  
3037-0800  
**Styling Ring**  
Measurements: 42x30x1,5 mm.  
Nickel free metal







## CHRISTINE HEADWEAR

soft line collection

The multi-functional Caretech® Bamboo Soft Line Collection consists of a large variety of our most popular turbans, scarves and headbands. All available in a large selection of basic colours.

Styles in this collection are tailored to ensure they stay in place all day during both sports and daily activities.

The all-natural bamboo-viscose fabric is breathable, moisture absorbent and extremely soft and comfortable, keeping your head warm and dry at all times.



CARETECH®  
BAMBOO

1000-0169 Yoga Turban



1000-0384  
**Yoga Turban**  
Bamboo-viscose



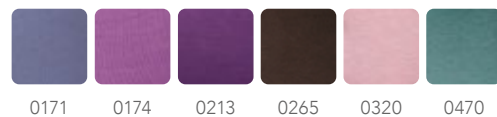
1003-0391  
**Lotus Turban**  
Bamboo-viscose







1005-0265  
Karma Turban w. Headband  
Bamboo-viscose



1011-0320  
Mantra Scarf - Long  
Bamboo-viscose



1510-0169  
Shakti Turban  
Bamboo-viscose



## CHRISTINE HEADWEAR chitta headband

### A MULTI-FUNCTIONAL ACCESSORY

The Christine Headwear headband, made in our unique and soft Caretech® Bamboo, is the perfect accessory. Use it with your favourite turban for added volume or with your own hair or wig for extra comfort.

1006-0213  
Chitta Headband  
Bamboo-viscose



1010-0619  
Chitta Headband - Printed  
Bamboo-viscose

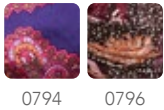


0619

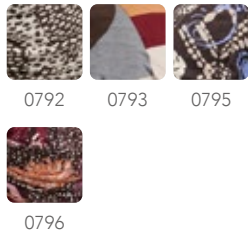




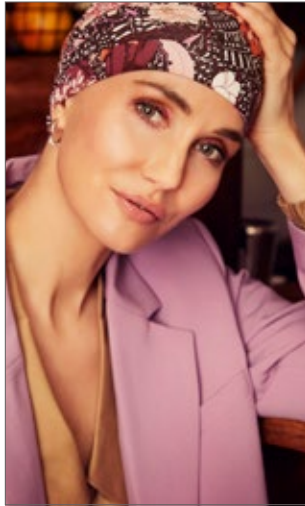
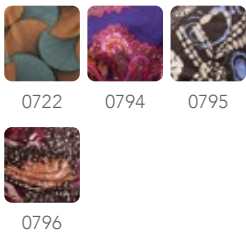
Page 2, 8  
1532-0796  
Belisa Turban w. Ribbons - Printed  
Bamboo-viscose



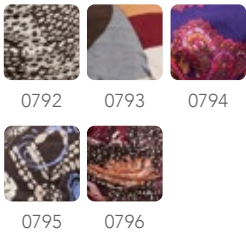
Page 6, 10, 14, 18  
1008-0795  
Lotus Turban - Printed  
Bamboo-viscose



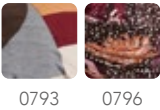
Page 7, 9, 11  
1419-0794  
Beatrice Turban w. Ribbons  
Bamboo-viscose



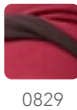
Page 4-5, 8, 11, 14, 18, back page  
2000-0796  
Yoga Turban - Printed  
Bamboo-viscose



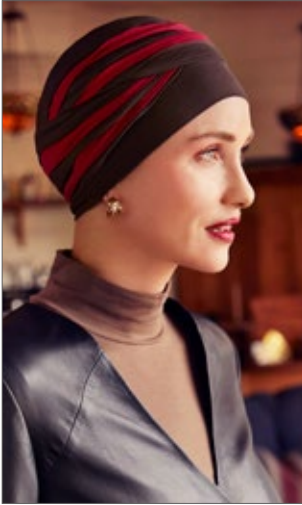
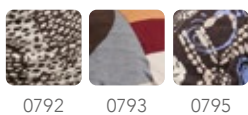
Page 11, 12  
1331-0793  
Shanti Turban w. Print  
Bamboo-viscose



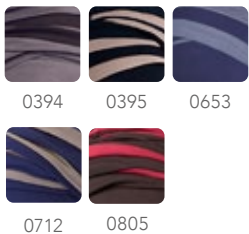
Page 17  
1507-0829  
Shakti Turban  
Bamboo-viscose



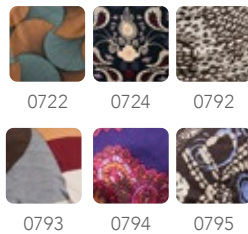
Page 7, 15, 19  
1529-0793  
Amia Turban - Printed  
Bamboo-viscose



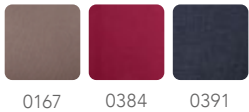
Page 16  
1461-0805  
Shanti Turban - Mixed Colours  
Bamboo-viscose



Page 7, 8, 13, 18  
1418-0792  
Shakti Turban - Printed  
Bamboo-viscose



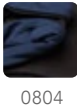
Page 17  
1366-0384  
Tula Turban  
Bamboo-viscose







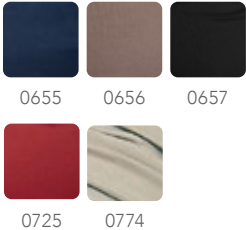
Page 20  
1508-0804  
**Nava Turban**  
Supima Cotton



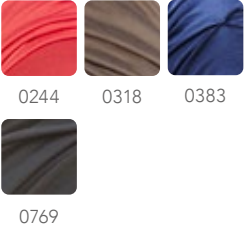
2 IN 1  
turban &  
headband



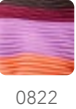
Page 23  
1484-0657  
**Zuri Turban**  
Supima Cotton



Page 24  
1293-0318  
**B.B. Becca Turban**  
Wool / Polyester w. 37.5° Technology



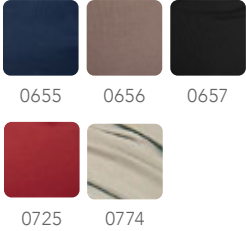
Page 26-27  
1528-0822  
**Luna · V Turban**  
Polyester w. cotton-viscose lining



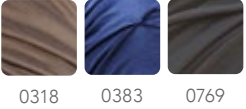
Page 21  
1533-0827  
**Aurelia Hat**  
Lambswool / Polyester w. cotton lining



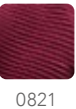
Page 22  
1490-0774  
**Nomi Turban**  
Supima Cotton



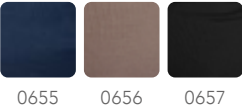
Page 25  
1291-0383  
**B.B. Beatrice Turban w. Ribbons**  
Wool / Polyester w. 37.5° Technology



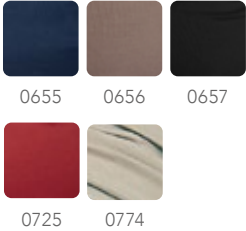
Page 28  
1527-0821  
**Luna · V Turban**  
Polyester w. bamboo-viscose lining



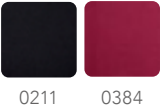
Page 23  
1521-0656  
**Sena Turban**  
Supima Cotton



Page 23  
1438-0655  
**Mila Turban**  
Supima Cotton



1398-0211  
**Nadi Turban**  
Bamboo-viscose



Page 30  
1534-0808  
**Emmy · V Turban - Printed**  
Modal w. bamboo-viscose lining

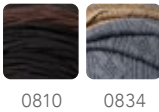


2 IN 1  
turban &  
headband

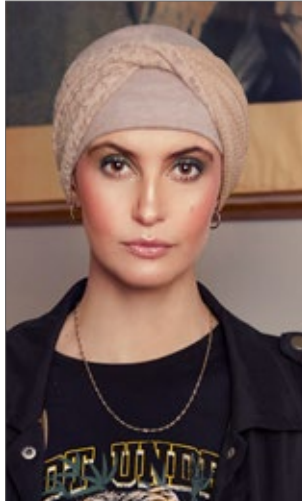




Page 29, 31  
1537-0834  
**Zoya · V Turban**  
Polyester w. viscose-mix lining



0810 0834



1517-0761  
**Emmy · V Turban**  
Polyester / Viscose w. cotton-viscose lining



0761

2 IN 1  
turban & headband



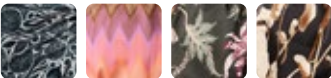
Page 33  
1536-0835  
**Lea · V Turban - Printed**  
Polyester w. bamboo-viscose lining



0835



Page 39, 41, 43  
3026-0801  
**Sapphire - Boho Turban - Printed**  
Polyester w. viscose-mix lining



0738 0801 0802 0830

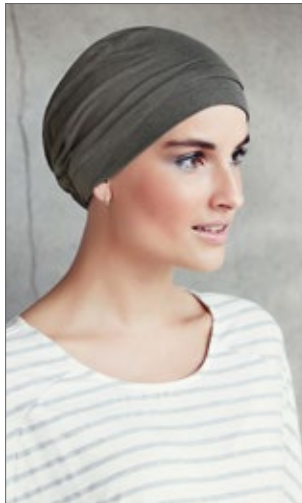


1511-0757  
**Emmy · V Turban**  
Polyester w. cotton-viscose lining



0757

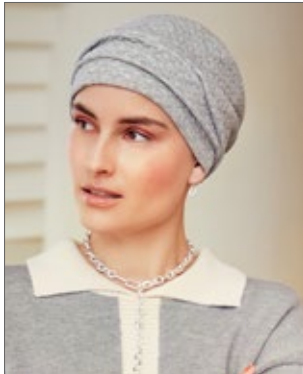
2 IN 1  
turban & headband



Page 34  
1356-0556  
**Laura · V Turban**  
Cotton / Viscose



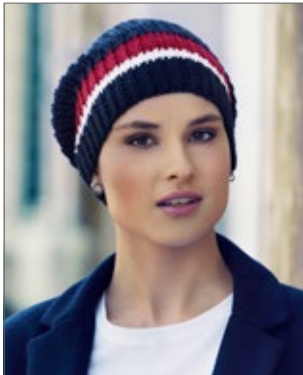
0553 0556



Page 32  
1470-0673  
**Nelly · V Turban**  
Polyester w. bamboo-viscose lining



0673 0674



Page 33  
1377-0575  
**Ebba · V Knitted Hat**  
Acrylic



0575



Page: Front page, 36-37, 40  
3032-0843  
**Scarlett - Boho Turban Set**  
Polyester w. viscose-mix lining



0837 0838 0843

2 IN 1  
turban & headband



1512-0749  
**Nelly · V Turban**  
Polyester / Viscose w. bamboo-viscose lining



0749



Page 35  
1355-0553  
**Anna · V Tube**  
Cotton / Viscose



0325 0551 0552 0553  
0554 0555 0556 0608  
0609 0625



Page 33  
1376-0573  
**Mille · V Knitted Hat**  
Acrylic



0573 0574



Page 44-45  
3036-0828  
**Sienna - Boho Turban Set - Printed**  
Polyester w. viscose-mix lining



0828


3 IN 1  
turban, ribbon & styling ring








Page 47  
3038-0811  
**Ruby Skye - Boho Hat**  
Viscose / Polyester w. bamboo-viscose lining  
  
0811



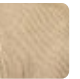



3030-0744  
**Ines - Boho Scarf**  
Polyester w. bamboo-viscose lining  
  
0744






Page 38, 42, 50  
3015-0615  
**Sapphire - Boho Turban Set**  
Viscose w. cotton lining  
  
0614 0615 0663

2 IN 1  
turban &  
band




Page 41  
3033-0841  
**Sapphire Boho Ribbon**  
Polyester  
  
0733 0760 0841 0842



Page 48-49  
3040-0833  
**Amber - Boho Turban Set - Printed**  
Polyester w. viscose-mix lining  
  
0831 0832 0833


2 IN 1  
turban &  
headband



Page 50  
3031-0745  
**Scarlett - Boho Turban Set - Printed**  
Polyester w. bamboo-viscose lining  
  
0745


2 IN 1  
turban &  
headband



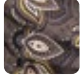
Page 50  
3001-0579  
**Sapphire - Boho Turban Set**  
Rayon w. cotton lining  
  
0579

2 IN 1  
turban &  
band



3016-0611  
**Sapphire Boho Ribbon - Printed**  
Polyester  
  
0611

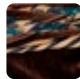



3017-0612  
**Sapphire Boho Ribbon - Printed**  
Viscose  
  
0612






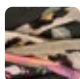
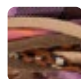
Page 46  
3028-0825  
**Pandora - Boho Cap**  
Polyester w. bamboo-viscose lining  
  
0825



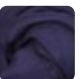


Page 51  
3025-0684  
**Scarlett - Boho Turban Set**  
Polyester w. cotton-viscose lining  
  
0684 0746

2 IN 1  
turban &  
headband



Page 38, 42  
3035-0839  
**Scarlett - Boho Headband**  
Polyester  
  
0797 0798 0799  
  
0839 0840



3018-0663  
**Sapphire Boho Ribbon**  
Viscose  
  
0614 0615 0663



## LET'S EXPRESS

Arrivals you don't want to miss!

This autumn we are launching two beautiful, limited-edition models that you do not want to miss out on.



LAUNCH  
- 12. SEPTEMBER -



A chic model in the finest bouclé – perfect for high street strolls and outdoorsy moods.

3021-0826  
Pandora - Boho Cap  
Polyester w. cotton lining



0826



LAUNCH  
- 10. OCTOBER -



One of your favourite models in a perfect warm autumn colour-mix. A comfy and beautiful must-have, just because...

1520-0806  
Shakti Turban w. Printed Headband  
Bamboo-viscose



0806



The Christine products are CE labelled, which means they classify as medical devices according to EU Directive (MDR 2017/745) concerning medical devices. By definition of the EU Directive a medical device is a material intended to be used by women for the purpose of protection of the skin against the heat, sun and the cold. Further, it is intended to relieve physical and mental discomfort resulting from hair loss as well as a general protection of women, who have lost their hair due to chemotherapy and other hair loss related illnesses. In addition, the CE mark is your guarantee that the products are appropriate and safe to use and wear.



We recommend handwashing your new headwear and laying it flat to dry. Do not tumble dry.



This catalogue is printed on FSC and Nordic Ecolabel certified paper.



### 37.5® TECHNOLOGY

Comfort in clothing is dictated by our temperature and the humidity next to our skin, known as our microclimate. When our microclimate balances at 37.5% relative humidity and our core temperature balances at 37.5 degrees, we are in the optimal comfort zone.

37.5® Technology headwear and clothing helps control the core temperature by accelerating the movement of moisture vapour before it can turn to liquid sweat.

If we get warm and damp, the 37.5® products will dry faster – up to 5 times faster than a similar product without 37.5® Technology. And, when moisture is removed from our headwear and clothing, we stay warmer when it's cold and cooler when it's warm.

The active particles used in 37.5® are derived from natural sources such as coconut shells and volcanic minerals. A combination of these special sources and the product features makes this a rather unique and intelligent headwear and clothing line.

Find further information about product care and safety on our website.

CARETECH® BAMBOO w/ALOE VERA CARETECH® BAMBOO

CARETECH® SUPIMA COTTON

The Christine Headwear bamboo and Supima fabrics are all labeled with a Caretech® tag.

Caretech® is your assurance that the headwear made from these specific fabrics are not only CE and Standard 100 by Oeko-Tex certified, but also developed and produced especially for the Christine Headwear collections. Caretech® because we believe in providing a high quality, exclusive and conscious headwear collection, for the beautiful you.



The Christine Headwear bamboo-viscose, Supima cotton, linen and Body Balance products are Standard 100 by Oeko-Tex certified. As is the Viva Headwear cotton-viscose line.

The Oeko-Tex certification is your assurance that the headwear product does not contain or give off any harmful substances.

Follow House of Christine



Meet us at #friendsofchristine

Thank you to this seasons beautiful location venues for their friendliness and hospitality - we are extremely grateful.  
The Lodge, Genarp, Sweden - MJ'S, Malmö, Sweden - Vilhelm Lauritzen Terminalen, Denmark





Christine<sup>®</sup>  
HEADWEAR

VIVA  
Headwear

  
Boho Spirit<sup>®</sup>  
HEADWEAR



HOUSE of CHRISTINE  
HEADWEAR

The Headwear Company · Denmark  
Contact: +45 96 60 43 10 · [info@houseofchristine.com](mailto:info@houseofchristine.com)  
[www.houseofchristine.com](http://www.houseofchristine.com)

#friendsofchristine